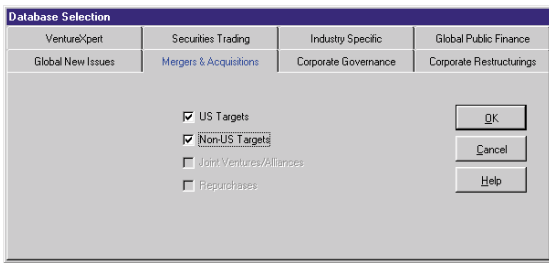




## Sample M&A Search

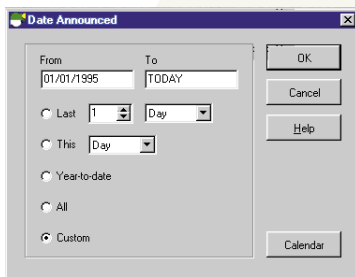


### Step 1. Select a Database.

Begin your search by selecting one of over 45 database options. You can also choose to open an existing SDC Standard Session which can duplicate League Tables featured in the press, or set up basic search criteria for you.

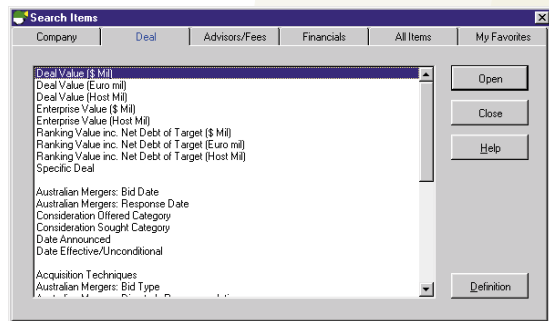
Check the desired database and click OK.

**HINT:** Click F1 to see complete database descriptions.



### Step 2. Choose a Date Range.

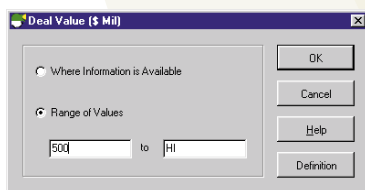
For the M&A database the date range reflects the date the merger/acquisition was announced. Enter a custom date range or choose from pre-set time periods, (e.g. Last 2 Quarters), then click OK.



### Step 3. Define Your Search.

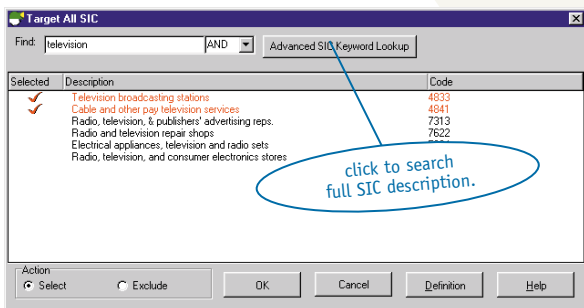
Choose from data items such as a company, nation, or industry to establish the criteria for your search. For this search we're using the value of the transaction (Deal Value) to narrow our search. Click on a data item and click Open.

**HINT:** The Search Items window contains lists of frequently used search items, categorized into tabs. The All Items tab lists all searchable data items. When selecting items from this tab, click the Add to My Favorites button to add any search item to the My Favorites tab.



Enter a value range for the data item selected and click OK.

For this search we've also selected the Target All SIC data item from the Company tab in the Search Items window to continue narrowing our search. Simply double-click on the items you wish to select or exclude, and click OK.

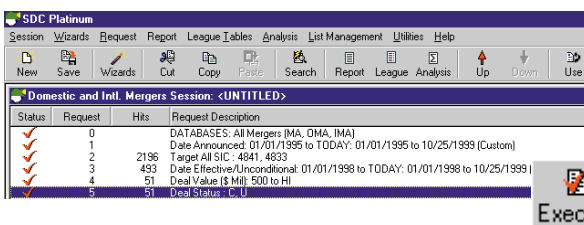


Continue selecting data items from the Search Items window until your search criteria defines the set of transactions you'd like to research.

### Step 4. Refine Your Search.

Re-order requests, modify criteria, or use one of the Utilities (refer to next page). At this point we recommend that you click on Execute to see the number of transactions in your current search result.

**HINT:** Easily modify your criteria by double-clicking on the request description.



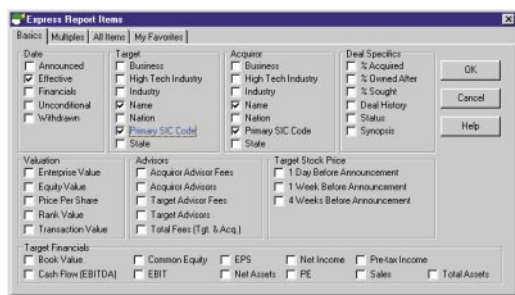
#### HELPFUL HINTS

Use SDC Platinum online help for:

- Data item definitions
- Complete descriptions of SDC databases
- Step-by-step instructions on specific tasks
- Answers to "How can I..." questions

For context sensitive help, press F1 or click on the Help button in any window.

Access the SDC Platinum User's Handbook by clicking on Help/Users Manual



## Step 5. Create a Custom Report.

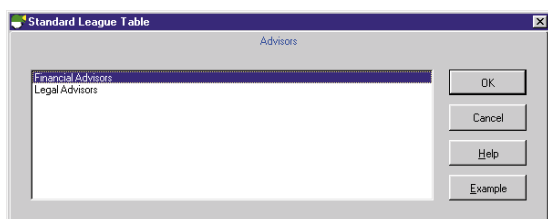
From the pull-down menu, choose Reports/New Custom.

In the Express Report Items window you can choose all of the data items you'd like to appear on your report.

or

From the pull down menu, choose League Tables/SDC Standard.

In the Custom Standard Table Window choose the type of League Table you'd like to create and click on OK.



## Step 6. Click on Execute.



## Step 7. View & Analyse Search Results.

Download your report or ranking data to a text, Microsoft® Excel, or Lotus file before or after you execute. Instantly create pie, line and bar charts from your rank data.

**HINT:** Cut, copy, and paste data from any combination of reports or ranks.

File Executive	Legal Name	Acquire Name	Target Street Address	Target Primary SIC Code	Acquire Primary SIC Code	Acquire Street Address
03/04/1999	TopCommuter New York Auto	Colterson Specialty Corp		4011	4011	1111 Street America
04/01/1999	Protonics Inc	T23 Satellite Development	6905 South Chester Suite 300	4841	4841	6905 South Chester Suite 300
04/09/1999	TC Communi-Funkcity Cable Sys	InvestMedia Partners VI LP		4841	4841	
05/03/1999	URN Television Corp	Hicks Musey Tate & Furst Inc	4 Richmond Square	4853	5795	200 Crescent Court Suite 1900
07/03/1999	SDC Communications Cable TV	Investcity Group		4841	4799	
08/03/1999	1045-TV Digital Trans	KNBD-TV (KATM/CPKAGE)	PO Box 1700	4822	4822	

## Get the most out of SDC Platinum's Utilities

**Use:** Add a request to use the results of a previous search request.

**View:** For search results, see a breakdown of hits by database type.

For a report or rank requests, view documents.

**Quick Display:** Display a list of transactions for current search results. You can hand-pick transactions from this list for further use and/or select a specific transaction and click on the Zoom button to create a detailed "All Data" report.

**Logical Set Operations:** Union, Intersect, or Difference two or more of your search results.

**Statistics:** Calculate the sum, minimum, average, maximum, and median on numerical items in your search result.

**Top N Deals:** Identify the top transactions in your search result, such as the top 10 M&A deals by value or the Top 25 common stock issues by manager fees.

**Save Current Search Result:** Save results of the last executed search result.

**Load Saved Search Result:** Load a previously saved search result.

## SDC PLATINUM HISTORICAL COVERAGE:

Worldwide Mergers, Acquisitions & Alliances	
U.S. Mergers & Acquisitions	from 1979
International Mergers & Acquisitions	from 1985
Corporate Stock Repurchase Programs	from 1994
U.S. Corporate New Issues	
Public Offerings	from 1970
144A Offerings	from 1990
Private Placements	from 1981
Worldwide Syndicated Loans	from 1983
Global Public Financings	
U.S. Municipal New Issues	from 1966
International Municipal New Issues	from 1963
Project Finance	from 1992
Poison Pills	from 1983
Private Equity Research	from 1970
Foreign Bonds Non US	from 1983
Eurobonds	from 1963
European and Asian Domestic Debt and Equity	from 1991
International Equities	from 1983
Project Financing	from 1992
MTN Takedowns	from 1987
ECPs/CDs/MTN Programmes	from 1983

## CLIENT SERVICES

Freephone in France,  
Germany, The Netherlands, UK 00800.2222.4444  
London 44.(0)20.7369.7678  
Frankfurt 49.(0)69.971.75301  
Paris 33.(0)1.44.53.78.50  
Hong Kong 852.2533.5588  
Japan 81.3.5218.6580  
United States 1.973.622.5200

Thomson Financial  
Aldgate House  
33 Aldgate High Street  
London  
EC3N 1DL  
Phone 44.(0)20.7369.7678  
Fax 44.(0)20.7369.7634  
support@tfibcm.com